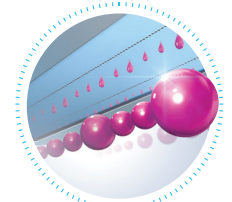


**ENABLING CREATIVITY THROUGH
 OUTSTANDING PERFORMANCE.**



Expect true garment printing reliability with SureColor™ SC-F2130 direct-to-garment printer. Equipped with PrecisionCore™ printhead technology, teamed with an automated maintenance design, the SC-F2130 brings efficiency and quality that are unmatched. Easy to use, with a quick turnaround, the printer increases your overall production, without compromising on quality.

- Up to
25mm Thick
- 1440
dpi
Resolution
Print
1440dpi
- Garment
Creator
- Low
Maintenance
- Epson
Genuine Inks
- 1 Year
Warranty



IT'S IN THE DETAILS.

With Epson UltraChrome™ ink, the SureColor SC-F2130 delivers consistent, vibrant prints.

5 COLOURS OPTIONAL WHITE 	DG EPSON ULTRACHROME DG INK	MAXIMUM PLATEN SIZE	MAX. INK CAPACITY PER COLOUR	PRECISIONCORE TFP PRINthead	MAXIMUM PRINT SPEED	SEC
		16" x 20"	600ML	SINGLE	HIGH SPEED COLOUR MODE (CMYK DUAL) COLOUR INK MODE (CMYK) WHITE INK MODE (CMYK+W)	9s* 15s** 52s**

Innovation In Printing
 Engineered with the latest Epson technology to deliver speed and unbeatable image quality.

Trusted Reliability
 PrecisionCore printhead and an automatic maintenance design enable fast printing with minimal downtime.

Exceptional Productivity
 Remarkable printing speeds enable a t-shirt to be printed in merely 9 seconds*.



*Refers to head firing time when using dual colour mode, image size is 10" x 8" landscape, applicable for white t-shirts only **Refers to head firing time, image size is 10" x 8" landscape

DIRECT-TO-GARMENT PRINTER
SURECOLOR™ SC-F2130

The SureColor SC-F2130 is the printer businesses need to produce quality prints directly onto garments. The SC-F2130 utilises high density ink to ensure vibrant and highly accurate colour transfer of designs onto white and even coloured fabrics.



Innovation In Printing

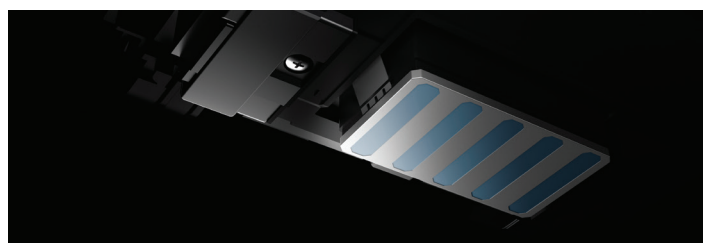
Epson develops innovations such as our PrecisionCore technology and UltraChrome Direct-To-Garment ink technology into our printer to deliver precision of the highest quality.

PrecisionCore Technology



PRECISIONCORE

Print graphics up to 1,440 x 720dpi for amazing quality that truly complements your design. The technology behind PrecisionCore encompasses a precise dot control to create images with outstanding clarity and sharpness on the garments.



Epson UltraChrome Direct-To-Garment Technology



Print directly onto fabric products with Epson UltraChrome DG ink to achieve accurate and bright colours with an outstanding finish. The ink has been specially formulated with high-dispersion ink technology that helps to reduce white ink sedimentation to give it a very natural white colour. The high-density ink allows prints to be of an unmatched stunning quality, even on coloured garments. The water-based pigment is durable and washable as prints achieved scores of 4.0 or higher on industry standard AATCC wash test and is certified to be safe for adults and children, including babies, in accordance with ECO PASSPORT by OEKO-TEX®.

Print directly onto fabric products with Epson UltraChrome DG ink to achieve accurate and bright colours with an outstanding finish. The ink has been specially

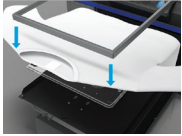
OEKO-TEX®
CONFIDENCE IN TEXTILES
ECO PASSPORT 
NEP 1603 Nissenken

Textile chemicals. Tested and verified.
www.oeko-tex.com/ecopassport

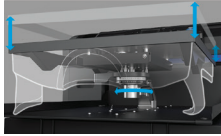
Easy Garment Setting

The SC-F2130 is easy to operate with minimal training required for the user. Fabric is easily loaded onto the platen and the height adjustment allows easy garment loading and adjustments according to the different needs.

Adjustment With Frame Set



Press and smoothen out garment and attach the platen frame.

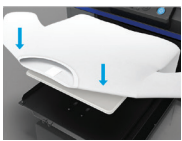


Adjust the platen height using the height adjustment lever.

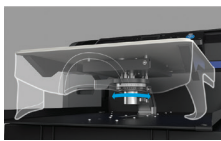


Garment is ready to be printed on.

Adjustment With New Platen Grip Pad



Press and smoothen out garment.



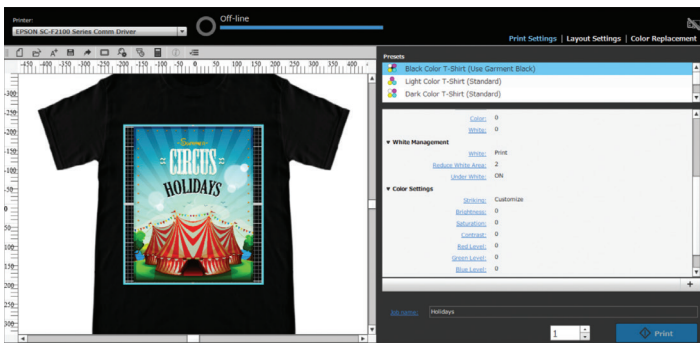
Adjust the platen height using the height adjustment.



Garment is ready to be printed on.

Intuitive Garment Creator Software

With Epson's intuitive Garment Creator software, it is easy for users to use and navigate through the interface to design, edit and customise designs for production. The software allows users to save their predefined colour management and layout controls to deliver consistently great results.



Trusted Reliability

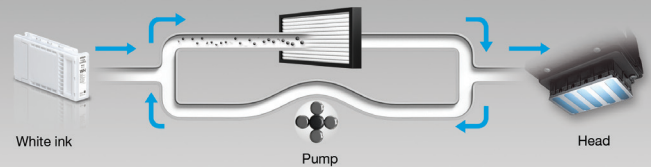
Commercial-grade Reliability

All components on the SC-F2130 are designed and built by Epson to ensure that the technology works cohesively to produce exceptional prints time and time again. The PrecisionCore print chip is ideal for printing with direct-to-garment ink chemistry and it is co-developed with the Epson UltraChrome DG ink technology to achieve extreme reliability.

Maximise Uptime and Productivity

The SC-F2130 is equipped with an advanced automated maintenance design that includes the use of a cleaning cartridge that will automatically clean the printhead cap to ensure that it is perpetually clean. Meanwhile, the white ink circulation system comes with an inline white ink filter to ensure better performance and reliability.

Ink Circulation System



The pump ensures constant circulation of the white ink inside the system.

Exceptional Productivity

Engineered to meet the needs of garment printing businesses, the SC-F2130 can print a t-shirt in just 9 seconds*, because of its PrecisionCore TFP printhead.

*Refers to head firing time when using dual colour mode, image size is 10" x 8" landscape, applicable for white t-shirts only



Partners In Perfection

SureColor F-series Dye-sublimation Textile Printers

Available in 44" and 64" models, the SureColor F-series are large format textile printers with exceptional reliability and high quality output up to 720 x 1,440 dpi for industrial-level commercial production houses.



SPECIFICATIONS

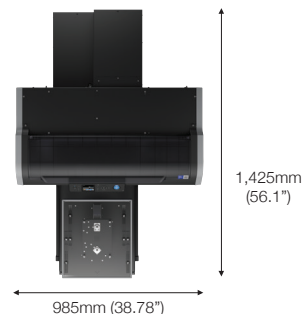
SURECOLOR™ SC-F2130

EPSON
EXCEED YOUR VISION

MODEL NUMBER	SC-F2130
Printhead Type	Epson PrecisionCore TFP
Print Speed (Default Setting)	
Colour Mode	High speed production (2 pass) - 15 sec Production (4 pass) - 27 sec
White + Colour Mode	High speed production (2 pass Colour + 4 pass White) - 52 sec Production (4 pass Colour + 8 pass White) - 87 sec
Maximum Resolution	Colour 1440 x 720 dpi, White 1440 x 1440 dpi
Droplet Size	21 pl (Standard size)
Ink	
Ink Type	UltraChrome DG ink
Ink Cartridge Capacity	600 ml, 250 ml (C, M, Y, BK, WH)
Media	100% cotton or blended materials with a minimum of 50% cotton
Connectivity	
Rear	USB2.0, 100-BaseTX
Front	USB memory slot (USB2.0)
Power Supply	AC 100-240 V, 50/60 Hz
Supported OS	
Garment Plugin	Windows® XP-32bit, Windows® 7-64bit, Mac OS 10.6 or higher
Adobe® Plugin	Plugin available for Adobe Photoshop® and Illustrator®
Platen	Medium platen 356 x 406 mm standard
Warranty	1 year
Inks and Consumables	
UltraChrome DG Cyan (250ml)	C13T730200
UltraChrome DG Magenta (250ml)	C13T730300
UltraChrome DG Yellow (250ml)	C13T730400
UltraChrome DG Black (250ml)	C13T730100
UltraChrome DG White (250ml)	C13T730A00
UltraChrome DG Cyan (600ml)	C13T725200
UltraChrome DG Magenta (600ml)	C13T725300
UltraChrome DG Yellow (600ml)	C13T725400
UltraChrome DG Black (600ml)	C13T725100
UltraChrome DG White (600ml)	C13T725A00
Single Pack Cleaning Cartridge	C13T726000
Pre-treatment Liquid (20L)	C13T726100
Maintenance Kit	C13T724000
Head Cleaning Set	C13S092021
Waste Ink Bottle	C13T724000
Air Filter	C13S092021
Large Platen Grip Pad	C13S210075
Medium Platen Grip Pad	C13S210076
Small Platen Grip Pad	C13S210077
Options	
Large Platen 406 x 508mm	C12C933921
Medium Platen 356 x 406mm	C12C933931
Small Platen 254 x 305mm	C12C933941
Extra Small Platen 178 x 203mm	C12C933951
Medium Grooved Platen 356 x 406mm	C12C933961
Sleeve Platen 102 x 102mm	C12C933971
Pre-treatment Roller Set	C12C891201
Replacement Rollers for Pre-treatment (3 Pieces)	C12C891211
Replacement Rollers for Pre-treatment (3 Pieces)	C12C891221

Dimensions & Weight

Weight: Approx. 82kg (180.78lbs)



© 2018 Epson Singapore Pte Ltd. All Rights Reserved. Reproduction in part or in whole, without the written permission from Epson, is strictly prohibited. EPSON and EXCEED YOUR VISION are registered trademarks of Seiko Epson Corporation. All other product names and other company names used herein are for identification purposes only and are the trademarks or registered trademarks of their respective owners. Epson disclaims any and all rights in those marks. Print samples shown are simulations only. Specifications and product availability are subject to change without notice and may vary between countries. Please check with local Epson offices for more information.

Dealer's Stamp

Information correct at time of printing
Printed April 2018

Sales Enquiries
800 120 5564

[f](#) EpsonSingapore [@](#)epsonsingapore [You Tube](#) EpsonSoutheastAsia [in](#) Epson Singapore

For latest specifications, visit www.epson.com.sg/f-series or call **800 120 5564**.